

## 2.7mm Lapidus Arthrodesis Surgical Technique

## Medical Implants

Astrolabe recognizes that proper surgical procedures and techniques are responsibilities of medical professionals.

The following guidelines are provided for information purposes only. Each surgeon must evaluate the appropriateness of the procedures based on their medical training, experience and condition of the patient. Before using the system, the surgeon must consult the operating instructions for additional warnings, precautions, indications, contraindications and adverse effects.



# Lapidus Arthrodesis 2.7 mm



# 2.7mm Lapidus Arthrodesis System

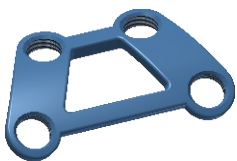
## GENERAL FEATURES AND INDICATIONS

- Locked Plate System that allows high fixation in a small area;
- Anatomically adjustable taking into account the anterior tibial tendon;
- It can be associated to 3.5mm cannulated screw for additional compression of the arthrodesis;
- The central holes allow perfect positioning of the plate without requiring a radiographic control.

### Indications

- Medial-plantar Lapidus Arthrodesis

## 2.7 mm Lapidus Arthrodesis System Plates and Screws



Locking Plate,  
Lapidus Arthrodesis,  
Fenestrated  
S/M



Locking Plate,  
Lapidus Arthrodesis,  
S/M



2.7mm  
CORTICAL SCREW



2.7mm  
LOCKING SCREW



Ø3.5 mm Cannulated Screw,  
Partly Threaded



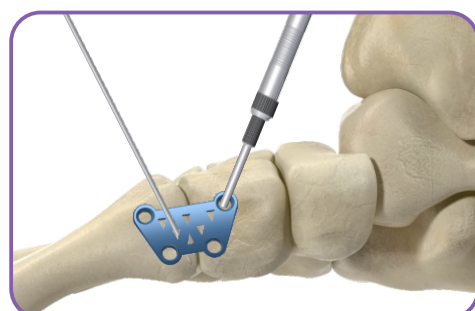
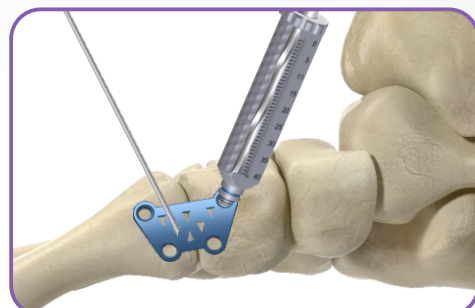
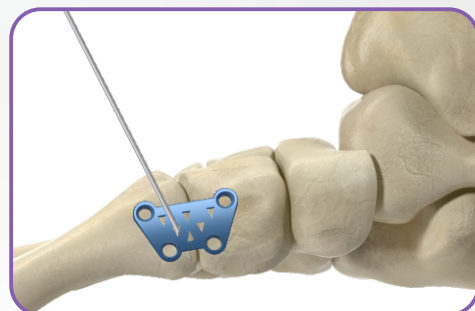
Ø3.5 mm Cannulated Screw,  
Fully Threaded



WASHER

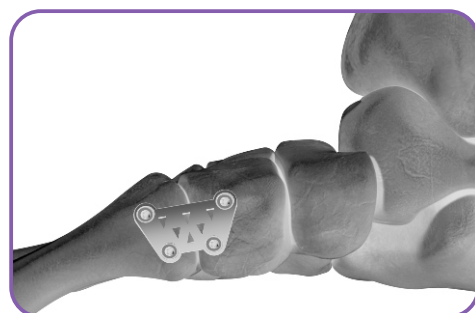
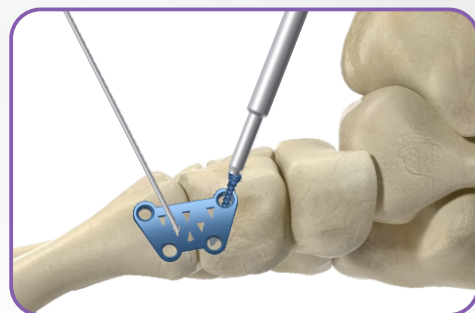
## Surgical Technique

- After choosing the appropriate plate, it is provisionally fixed in place with a Kirschner Wire.
- Properly place the Threaded Graduated Drill Guide (item 07) by turning it into the threaded hole, then proceed with drilling using the Drill Bit (item 01/02/04).
- The reading of the screw measurement can be made directly on the Graduated Drill Guide (item 07) or using the Depth Gauge (item 10).



## Surgical Technique

- Use the Handle (item 06) and Shaft Screwdriver (item 08) to position the screws.
- The placement of the screws procedure is repeated as many times as necessary, for optimal fixation of the plate.
- Check the final position of the screws through the image intensifier.
- Remove and dispose of the Kirschner Wire.
- Proceed with x-ray to check if final position is according to initial intention.



01

**Drill Bit, Ø2.0 x 120 mm, Stop 50 mm,**  
AO Coupling, Blue Code  
Cod.: 09.01.03.20020



07

**Graduated Drill Guide,**  
Ø2.0 x 40 mm, Threaded,  
Blue Code  
Cod.: 09.05.14.04020



02

**Drill Bit, Cannulated,**  
Øext. 2.5 x Øint. 1.4 x 95 mm, twist length  
30 mm  
AO Coupling  
Cod.: 09.01.04.25095



08

**Shaft Screwdriver, Torx-8, 90 mm,**  
AO Coupling, Blue Code  
Cod.: 09.07.04.08091



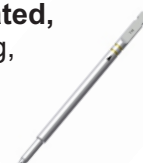
03

**Drill Bit, Ø2.0 x 125 mm, Stop 50 mm,**  
Stryker Coupling, Barrel Ø4.5 mm,  
Blue Code  
Cod.: 09.01.07.20021



09

**Shaft Screwdriver, Cannulated,**  
Torx-10, 90 mm, AO Coupling,  
Yellow Code  
Cod.: 09.07.08.10092



04

**Drill Bit, Cannulated,**  
Øext. 2.5 x Øint. 1.4 x 95 mm, twist length  
30 mm  
Cod.: 09.01.10.25095



10

**Depth Gauge, 60 mm**  
Cod.: 09.08.01.00060



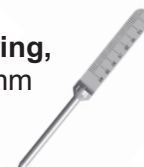
05

**Countersink, Cannulated,**  
Ø3.5 mm with Stop  
AO Coupling  
Cod.: 09.02.02.35010



11

**Gauge 40 mm, Direct Measuring,**  
for Wire 100 mm, Ø up to 1.4 mm  
Cod.: 09.08.02.14040



06

**Handle, Cannulated,**  
AO Coupling, 120 mm, Blue  
Cod.: 09.04.04.12010



12

**Plate and Screw Holding Forceps**  
Angled, 150 mm  
Cod.: 09.10.06.00150





# **2.7mm**

## **Lapidus Arthrodesis**

### **Surgical Technique**

Rua José Gomes Ferreira nº 2 - Armazém 1  
2660-517 São Julião do Tojal, Loures, Portugal  
Tlf.: (+351) 219 672 298 | [info@astrolabe-medical.com](mailto:info@astrolabe-medical.com)  
[www.astrolabe-medical.com](http://www.astrolabe-medical.com)